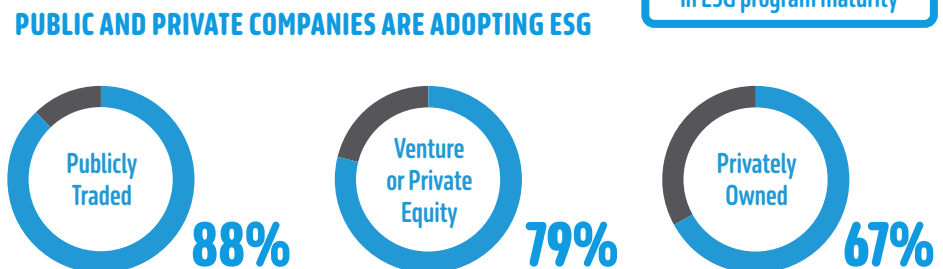
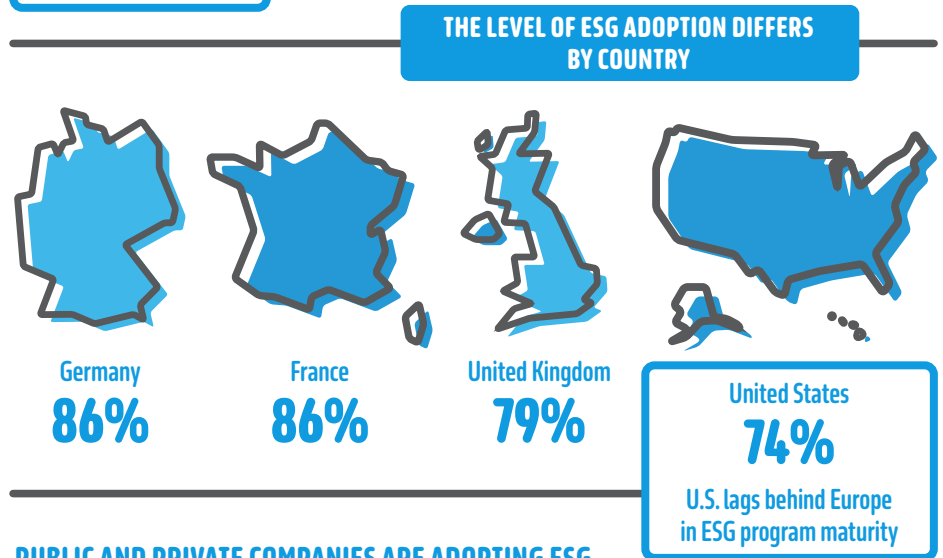
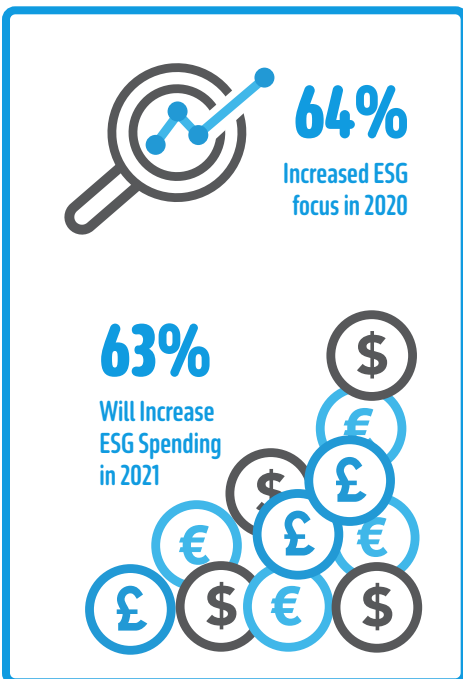
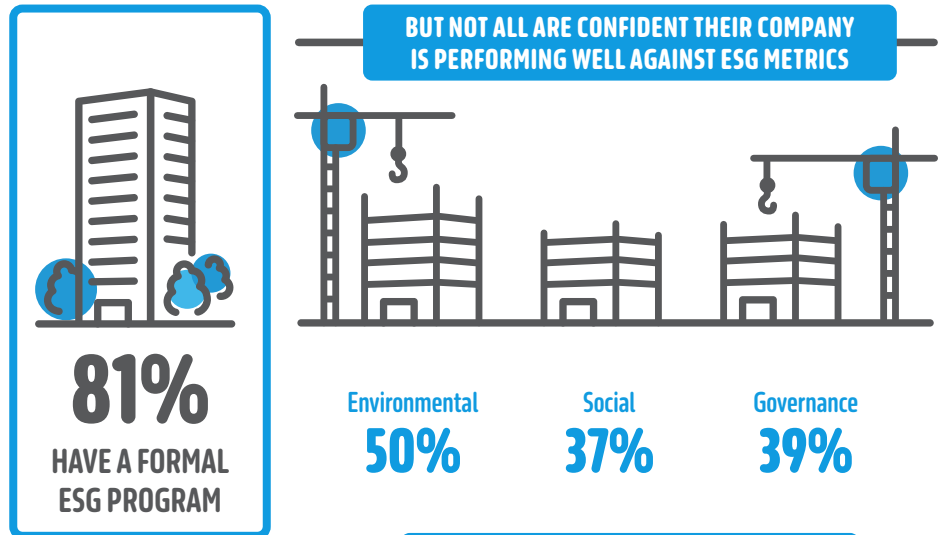


ESG SURVEY

Measuring Environmental Social and Governance (ESG) Program Commitment in the US and Europe

In December 2020, OnePoll conducted a survey on behalf of NAVEX Global to gauge corporate commitment to ESG programs and performance. The respondents included 1250 managers and senior leaders at larger companies (more than 500 employees) in the US, UK, France and Germany. Some of the key findings are illustrated here.

There is evidence of growing commitment to measuring and improving ESG metrics in the coming year. This commitment is backed by an expectation for greater investment in ESG programs among companies in both the US and Europe.



ABOUT NAVEX GLOBAL

NAVEX Global is the worldwide leader in integrated risk and compliance management software and services. Our solutions are trusted by thousands of customers around the globe to help them manage risk, address complex regulatory requirements, build corporate ESG programs and foster ethical workplace cultures. For more information, visit www.navexglobal.com.